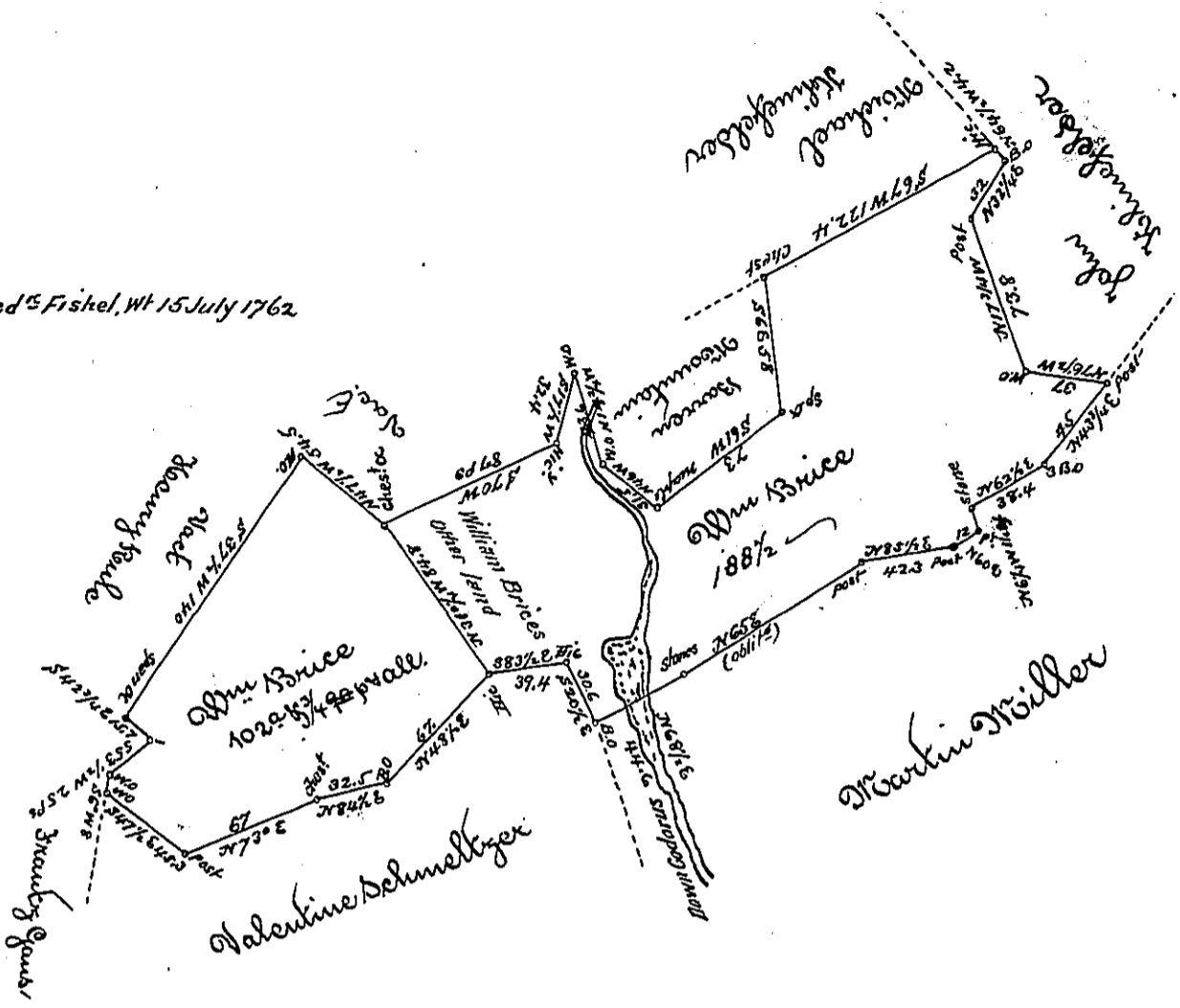


188 1/2 on Wt to Fred & Fiskel, Wt 15 July 1762
 102 3/4
 Total 291 1/4



Situated in Cadorus Township York County and surveyed the 22^d day of
 June 1786 in pursuance of a Warrant dated the 4th day of May 1786.
 188 1/2 A. is in Cadorus & Shrewsbury Township
 To John Lukens Esq. Surveyor Genl. By Moses McLean D. D.

IN TESTIMONY that the above is a copy of the original remaining on file in the
 Department of Internal Affairs of Pennsylvania, made conformably to an Act of Assembly approved the 16th day of
 February, 1833, I have hereunto set my Hand and caused
 the Seal of said Department to be affixed at Harrisburg, this

second _____ day of _____ June _____ 1896.

James W. Latta
 Secretary of Internal Affairs.